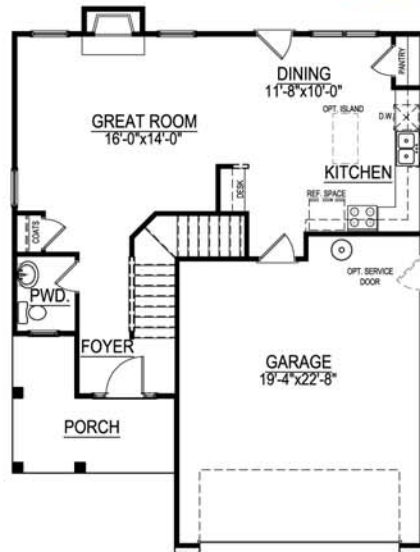
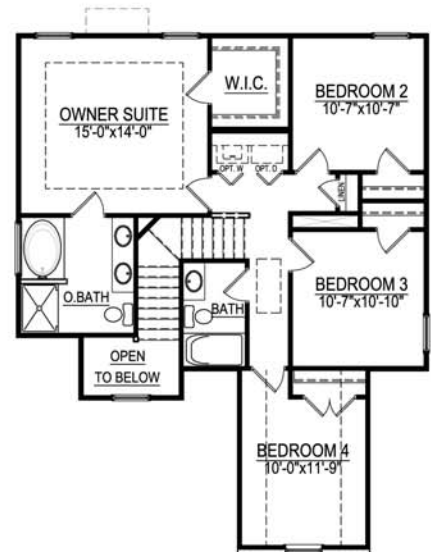




Elevation "B" Featured



FIRST FLOOR



SECOND FLOOR

The Hollingsworth

First Floor:	718s.f.	Bedrooms:	4
Second Floor:	1049s.f.	Baths:	2.5
Total Square Feet:	1767s.f.	Available Foundations:	Slab on Grade
Base Width:	33'-0"	Plan Options Include:	See sales representative
Base Depth:	43'-4"		

